

PROVINCETOWN-2002 ALTERATION-SHEET ONE OF EIGHT SHEETS
LAYOUT NO. 7703

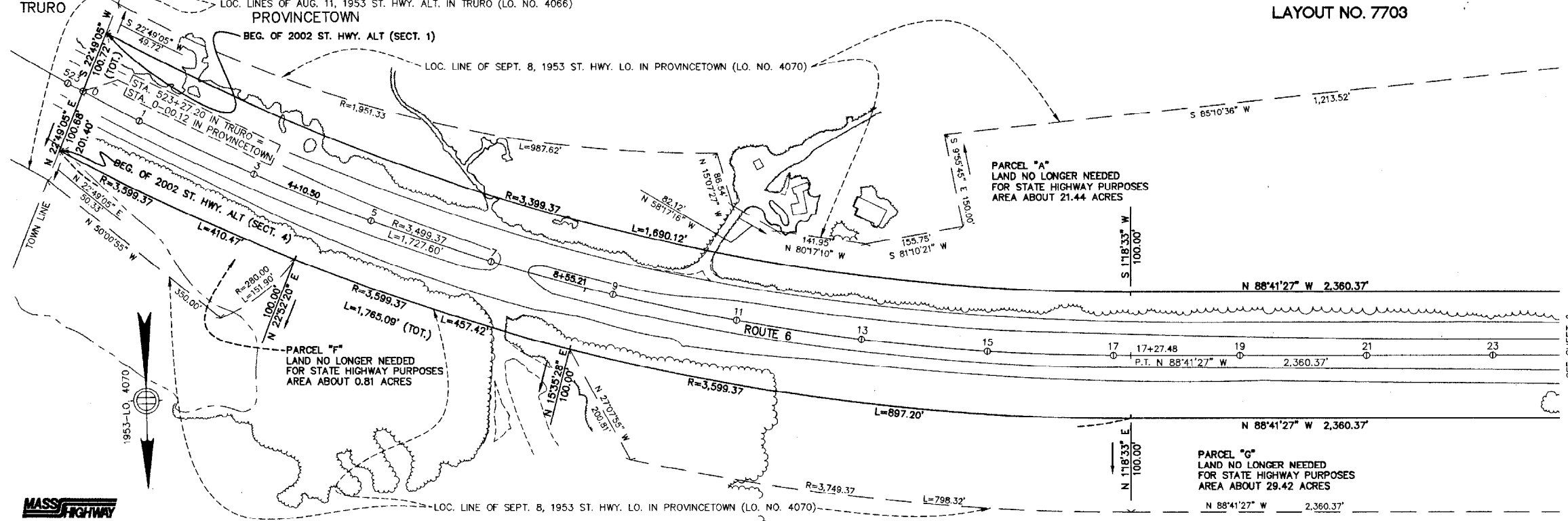
TRURO

LOC. LINES OF AUG. 11, 1953 ST. HWY. ALT. IN TRURO (LO. NO. 4066)

PROVINCETOWN

BEG. OF 2002 ST. HWY. ALT (SECT. 1)

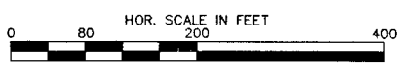
LOC. LINE OF SEPT. 8, 1953 ST. HWY. LO. IN PROVINCETOWN (LO. NO. 4070)



SEE SHEET 2



NOTE:
THE ALTERATION CONSISTS OF REVISING THE LOCATION LINES OF THE STATE HIGHWAY TO EXCLUDE THEREFROM CERTAIN AREAS OF LAND NO LONGER NEEDED FOR STATE HIGHWAY PURPOSES.



A TRUE COPY - ATTEST

SECRETARY, MASS. HIGHWAY COMB.
MASS. HIGHWAY DEPARTMENT
Commonwealth of Massachusetts

I CERTIFY THAT THIS PLAN HAS BEEN PREPARED IN CONFORMITY WITH THE RULES AND REGULATIONS OF THE REGISTERS OF DEEDS OF THE COMMONWEALTH OF MASSACHUSETTS.



May 22, 2002
DATE
Michael P. Chinnard
SIGNATURE

THIS CERTIFIES THAT THE LOCATION OF THE HIGHWAY HAS BEEN ALTERED AS SHOWN ON THIS PLAN AND THAT SAID HIGHWAY AS ALTERED WAS LAID OUT AND TAKEN CHARGE OF AS A STATE HIGHWAY BY THE DEPARTMENT OF HIGHWAYS ON MAY 24, 2002 IN ACCORDANCE WITH CHAPTER 81 OF THE GENERAL LAWS.

John Coffey

MASSACHUSETTS DEPARTMENT OF HIGHWAYS

THE COMMONWEALTH OF MASSACHUSETTS
PLAN OF ROAD
IN THE TOWN OF
PROVINCETOWN
BARNSTABLE COUNTY
ALTERED AND LAID OUT AS A STATE HIGHWAY
BY THE DEPARTMENT OF HIGHWAYS
MAY 24, 2002
SCALE: 80 FEET TO THE INCH
Thomas J. Boudreau, P.E.
CHIEF ENGINEER
LAYOUT NO. 7703